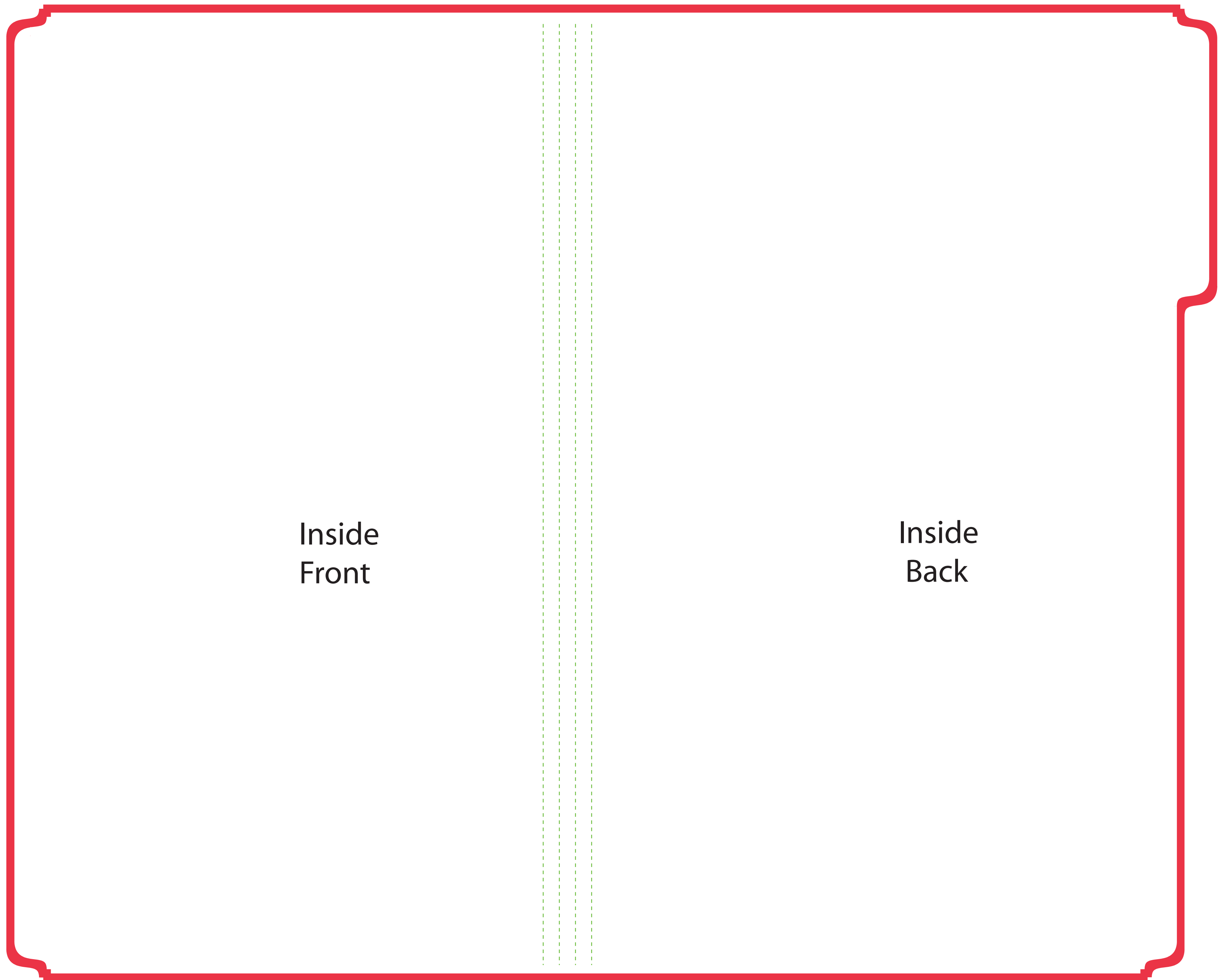


# Legal File Folder Inside View (14.75" x 9.5" x.5" Tab Extension)



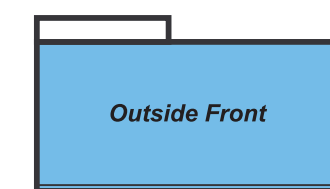
Inside  
Front

Inside  
Back

**To ensure quality...**

- \* Your design must be prepared using one the native programs listed on our website.
- \* Your file should not be saved in a 72 dpi file format
- \* Color should be in CMYK Format.

*This template is used for reference only and is formatted for CMYK Output.*



-  **Bleed Area**
-  **Final Size Area**
-  **Gusset Score Lines**