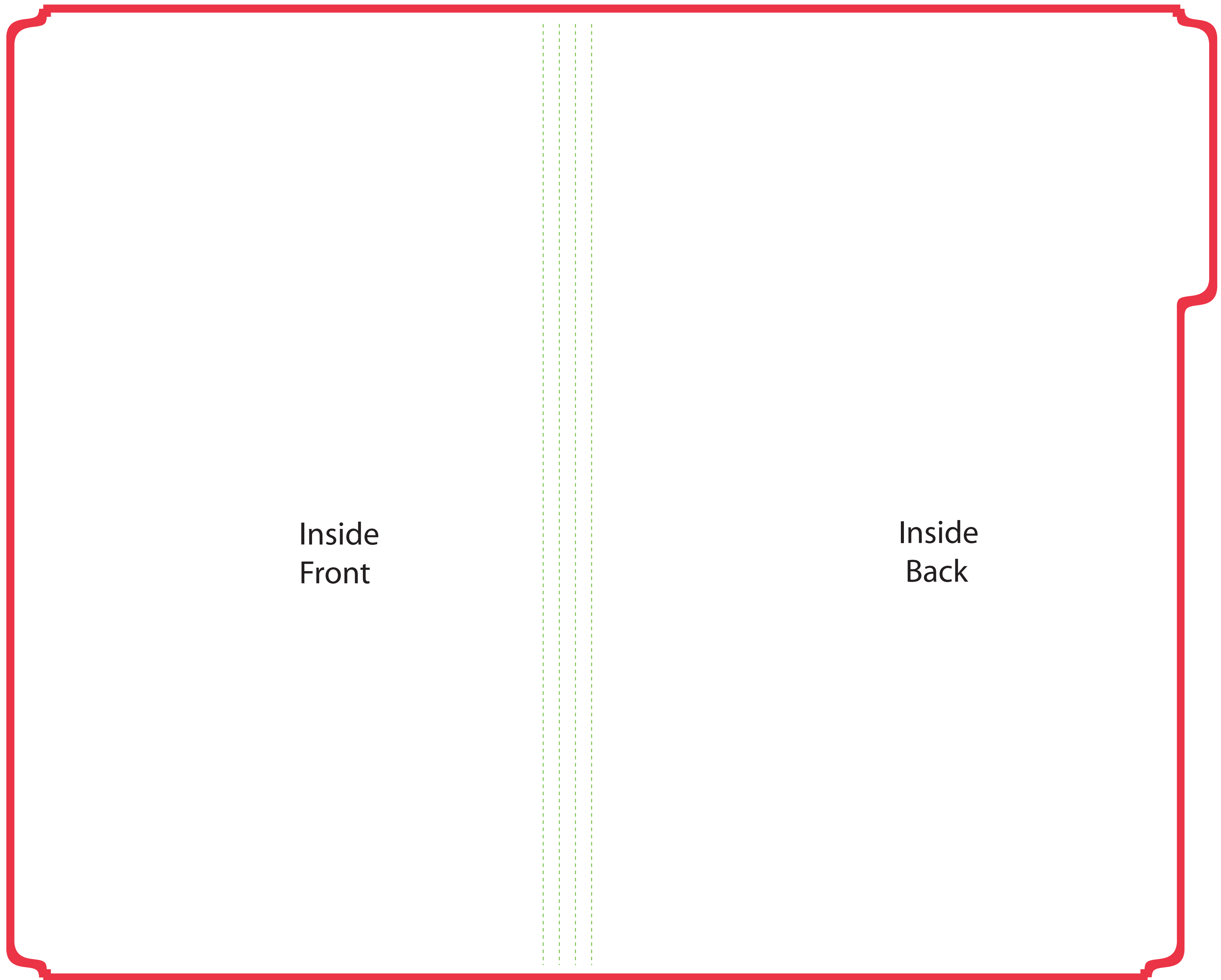


Legal File Folder Inside View (14.75" x 9.5" x.5" Tab Extension)



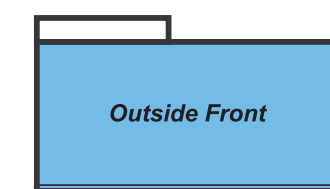
Inside
Front

Inside
Back

To ensure quality...

- * Your design must be prepared using one the native programs listed on our website.
- * Your file should not be saved in a 72 dpi file format
- * Color should be in CMYK Format.

This template is used for reference only and is formatted for CMYK Output.



-  **Bleed Area**
-  **Final Size Area**
-  **Gusset Score Lines**